

Frame Fit Specifications

ROAD CRANKSETS

The benefits SRAM 1x10, 2x10, and 3x10 delivers—a full range of usable gears, less weight, easier and smoother shifting in all terrains—are becoming understood by riders of all levels, not just pros. To fully appreciate how SRAM 1x10, 2x10, and 3x10 can help you make the most of your ride, we wanted to provide a resource with the crankset specifications you need to deliver the benefits of a 1x10, 2x10, or 3x10 drivetrain to your customers.

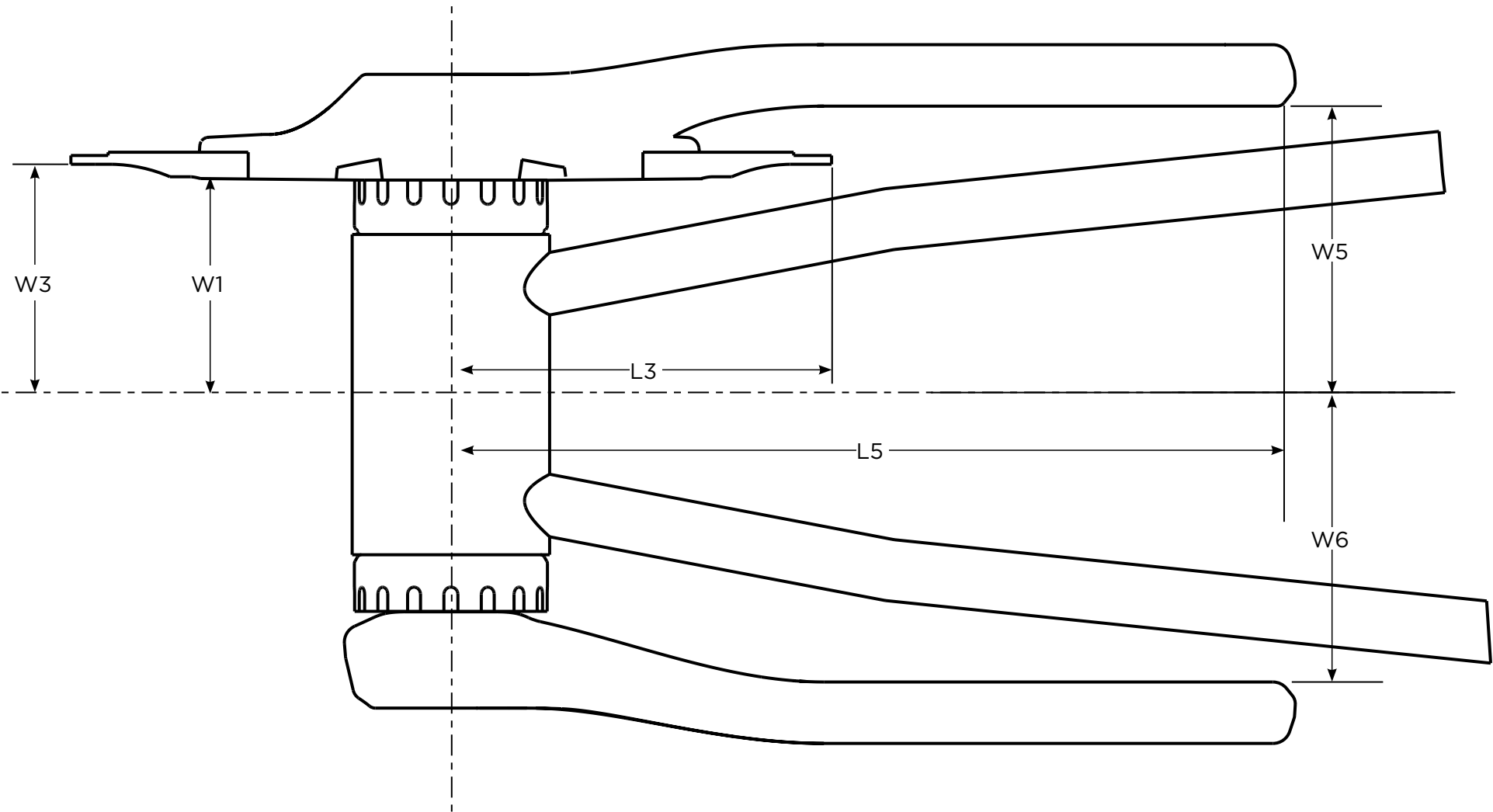
SRAM®

Table of Contents

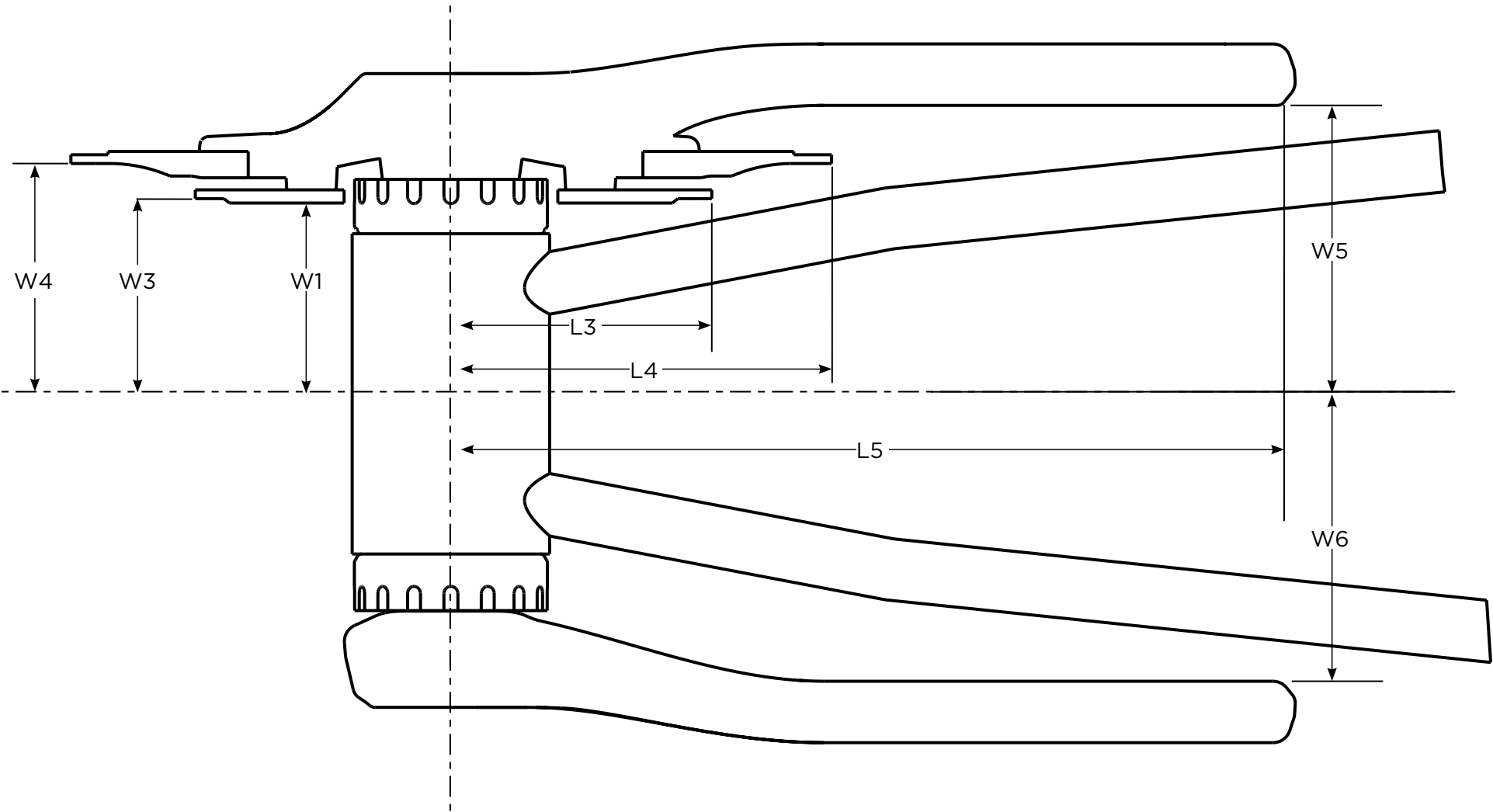
DIAGRAMS	3
MEASUREMENT DIAGRAM [1X10]	4
MEASUREMENT DIAGRAM [2X10]	5
MEASUREMENT DIAGRAM [3X10]	6
CRANKSETS	7
RED 2012 [2X10]	8
RED 2011 BLACK EDITION CRANKSETS [2X10]	9
FORCE CRANKSETS [2X10]	10
RIVAL OCT/ROULEUR OCT CRANKSETS [2X10]	11
RIVAL OCT/ROULEUR OCT CRANKSETS [3X10]	12
S900/S950/S975 CRANKSETS [2X10]	13
ROULEUR/S500/S550 CRANKSETS [2X10]	14
ROULEUR/S500/S550 CRANKSETS [3X10]	15
APEX/ELITA/S300/S350 CRANKSETS [1X10]	16
APEX/ELITA/S300/S350 CRANKSETS [2X10]	17
APEX/ELITA/S300/S350 CRANKSETS [3X10]	18
TOURO/S100/S150 CRANKSETS [1X10]	19
TOURO/S100/S150 CRANKSETS [2X10]	20
ISOFLOW CRANKSETS [1X10]	21
ISOFLOW CRANKSETS [2X10]	22
OMNIUM CRANKSETS [1X10]	23

Diagrams

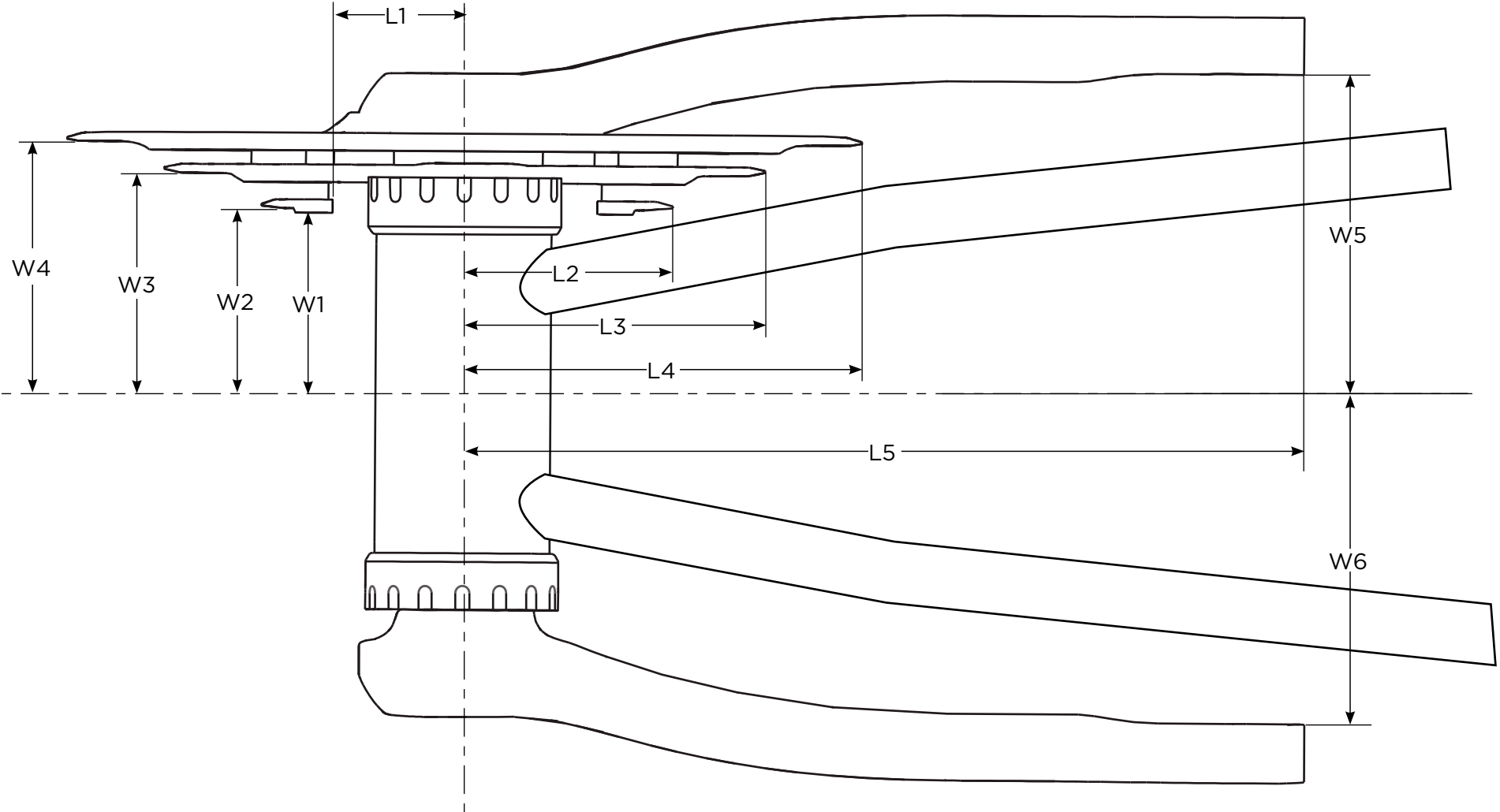
Measurement Diagram [1x10]



Measurement Diagram [2x10]



Measurement Diagram [3x10]



Cranksets

Red 2012 [2x10]

CRANKSET FRAME CLEARANCE INFORMATION									
Chain Ring Combination	L3	L4	L5	W1	W3	W4	W5 (min)	W6 (min)	
CRANKSET	53/39	80.9 mm	109.2 mm	197 mm	39.2 mm	40.3 mm	48.1 mm	59.9 mm	59.9 mm
	50/34	70.9 mm	103.2 mm						
Q-factor : 145 mm									
Bottom Bracket Type(s) : GXP : PressFit GXP : BB30 : PressFit 30									

Red 2011 Black Edition Cranksets [2x10]

CRANKSET FRAME CLEARANCE INFORMATION									
Chain Ring Combination	L3	L4	L5	W1	W3	W4	W5 (min)	W6 (min)	
53/39 (53/39TT)	80.9 mm	109.2 mm	197 mm	40.5 mm	41.5 mm	47.5 mm	60 mm	60.3 mm GXP : PFGXP	60 mm BB30 : PF30
54/42TT	88 mm	112.7 mm							
55/42TT		114.8 mm							
50/34	70.9 mm	103.2 mm							
52/36	74.9 mm	107.2 mm							
52/38	78.9 mm								
46/36	74.9 mm	95.1 mm							
Q-factor : 145.3 mm (GXP : PFGXP) : 145 mm (BB30 : PF30)									
Bottom Bracket Type(s) : GXP : PressFit GXP : BB30 : PressFit 30									

Force Cranksets [2x10]

CRANKSET FRAME CLEARANCE INFORMATION										
Chain Ring Combination	L3	L4	L5	W1	W3	W4	W5 (min)		W6 (min)	
53/39	80.9 mm	109.2 mm	197.2 mm	40.5 mm	41.5 mm	47.5 mm	61 mm GXP : PFGXP	60 mm BB30 : PF30	61.2 mm GXP : PFGXP	60 mm BB30 : PF30
54/42TT	88 mm	112.7 mm								
55/42TT		114.8 mm								
50/34	70.9 mm	103.2 mm								
52/36	74.9 mm	107.2 mm								
52/38	78.9 mm									
48/34	70.9 mm	99 mm								
46/36	74.9 mm	95.1 mm								
Q-factor : 149.2 mm (GXP : PFGXP) : 145 mm (BB30 : PF30)										
Bottom Bracket Type(s) : GXP : PressFit GXP : BB30 : PressFit 30										

Rival OCT/Rouleaur OCT Cranksets [2x10]

CRANKSET FRAME CLEARANCE INFORMATION									
Chain Ring Combination	L3	L4	L5	W1	W3	W4	W5 (min)	W6 (min)	
CRANKSET	53/39	80.9 mm	109.2 mm	196 mm	40.5 mm	41.5 mm	47.5 mm	61 mm	61 mm
	50/36	74.9 mm	103.2 mm						
	50/34	70.9 mm							
	48/34		99 mm						
	46/38	78.9 mm	95.1 mm						
	46/36	74.9 mm							
Q-factor : 147 mm									
Bottom Bracket Type : GXP : PressFit GXP									

Rival OCT/Rouleur OCT Cranksets [3x10]

CRANKSET FRAME CLEARANCE INFORMATION										
Chain Ring Combination	L1	L2	L3	L4	L5	W1	W3	W4	W5 (min)	W6 (min)
52/39/30	56 mm	62.8 mm	80.9 mm	107.2 mm	196 mm	40.5 mm	41.5 mm	47.5 mm	65.2 mm	61 mm
										Q-factor : 151.2 mm
										Bottom Bracket Type : GXP : PressFit GXP

CRANKSET

S900/S950/S975 Cranksets [2x10]

CRANKSET FRAME CLEARANCE INFORMATION								
Chain Ring Combination	L3	L4	L5	W1	W3	W4	W5 (min)	W6 (min)
53/39	80.9 mm	109.2 mm	196.1 mm	40.5 mm	41.5 mm	47.5 mm	60 mm	60 mm
54/42TT	88 mm	112.7 mm						
55/42TT		114.8 mm						
50/34	70.9 mm	103.2 mm						
52/36	74.9 mm	107.2 mm						
52/38	78.9 mm							
48/34	70.9 mm	99 mm						
46/38	78.9 mm	95.1 mm						
46/36	74.9 mm							
Q-factor : 145 mm								
Bottom Bracket Type(s) : GXP : PressFit GXP : BB30 : PressFit 30								

Rouleir/S500/S550 Cranksets [2x10]

CRANKSET FRAME CLEARANCE INFORMATION									
Chain Ring Combination	L3	L4	L5	W1	W3	W4	W5 (min)	W6 (min)	
CRANKSET	53/39	80.9 mm	109.2 mm	195.2 mm	40.5 mm	41.5 mm	47.5 mm	60 mm	60 mm
	50/36	74.9 mm	103.2 mm						
	50/34	70.9 mm							
	48/34		99 mm						
	46/38	78.9 mm	95.1 mm						
	46/36	74.9 mm							
Q-factor : 145 mm									
Bottom Bracket Type(s) : GXP : PressFit GXP : BB30 : PressFit 30									

Rouleir/S500/S550 Cranksets [3x10]

CRANKSET FRAME CLEARANCE INFORMATION											
Chain Ring Combination	L1	L2	L3	L4	L5	W1	W2	W3	W4	W5 (min)	W6 (min)
52/39/30	56 mm	62.8 mm	80.9 mm	107.2 mm	195.2 mm	36.6 mm	37.6 mm	45.5 mm	51.3 mm	65 mm	60 mm
											Q-factor : 150 mm
											Bottom Bracket Type(s) : GXP : PressFit GXP

CRANKSET

Apex/Elita/S300/S350 Cranksets [1x10]

CRANKSET FRAME CLEARANCE INFORMATION								
Chain Ring Combination	L3	L5	W1	W3	W5	W6 (min)		
CRANKSET	48	99.1 mm	196.7 mm	40.5 mm	41.5 mm	60 mm	60 mm GXP : PFGXP	61 mm BB30 : PF30
	Q-factor : 145 mm (GXP : PFGXP) ; 146 mm (BB30 : PF30)							
	Bottom Bracket Type(s) : GXP : PressFit GXP : BB30 : PressFit 30							

Apex/Elita/S300/S350 Cranksets [2x10]

CRANKSET FRAME CLEARANCE INFORMATION										
Chain Ring Combination	L3	L4	L5	W1	W3	W4	W5	W6 (min)		
CRANKSET	53/39	80.9 mm	109.2 mm	196.7 mm	40.5 mm	41.5 mm	47.5 mm	60 mm	60 mm GXP : PFGXP	61 mm BB30 : PF30
	50/36	74.9 mm	103.2 mm							
	50/34	70.9 mm								
	48/34		99 mm							
	46/38	79 mm	95.1 mm							
	48/39	80.9 mm	99.1 mm							
	46/36	74.9 mm	95.1 mm							
Q-factor : 145 mm (GXP: PFGXP) : 146 mm (BB30 : PF30)										
Bottom Bracket Type(s) : GXP : PressFit GXP : BB30 : PressFit 30										

Apex/Elita/S300/S350 Cranksets [3x10]

CRANKSET FRAME CLEARANCE INFORMATION											
Chain Ring Combination	L1	L2	L3	L4	L5	W1	W2	W3	W4	W5	W6 (min)
CRANKSET 52/39/30	56 mm	62.8 mm	80.9 mm	107.2 mm	196.7 mm	36.6 mm	37.6 mm	45.5 mm	51.3 mm	65 mm	65 mm
				103.1 mm							
											Q-factor : 155 mm
Bottom Bracket Type(s) : GXP : PressFit GXP											

Touro/S100/S150 Cranksets [1x10]

CRANKSET FRAME CLEARANCE INFORMATION								
Chain Ring Combination	L3	L4	L5	W1	W3	W4	W5 (min)	W6 (min)
CRANKSET	48	99.1 mm		109.5	40.5	41.5	61 mm	59 mm
	G52	107.2 mm	112.5 mm					
Q-factor : 145 mm								
Bottom Bracket Type : Powerspline								

Touro/S100/S150 Cranksets [2x10]

CRANKSET FRAME CLEARANCE INFORMATION								
Chain Ring Combination	L3	L4	L5	W1	W3	W4	W5 (min)	W6 (min)
53/39	80.9 mm	109.2 mm	190.5 mm	40.5 mm	41.5 mm	47.5 mm	61 mm	59 mm
50/34	70.9 mm	103.2 mm						
48/34		99 mm						
46/36	74.9 mm	95.1 mm						
Q-factor : 145 mm								
Bottom Bracket Type : Powerspline								

IsoFlow Cranksets [1x10]

CRANKSET FRAME CLEARANCE INFORMATION								
Chain Ring Combination	L3	L4	L5	W1	W3	W4	W5 (min)	W6 (min)
G52	107.2 mm	112.5 mm	191.8 mm	40.5 mm	41.5 mm	47.5 mm	61 mm	59 mm
								Q-factor : 145 mm
								Bottom Bracket Type : Powerspline

CRANKSET

IsoFlow Cranksets [2x10]

CRANKSET FRAME CLEARANCE INFORMATION								
Chain Ring Combination	L3	L4	L5	W1	W3	W4	W5 (min)	W6 (min)
50/34	70.9 mm	103.2 mm	191.8 mm	40.5 mm	41.5 mm	47.5 mm	61 mm	59 mm
							Q-factor : 145 mm	
							Bottom Bracket Type : Powerspline	

CRANKSET

Omnium Cranksets [1x10]

CRANKSET FRAME CLEARANCE INFORMATION						
Chain Ring Combination	L3	L5	W1	W3	W5 (min)	W6 (min)
48	99.1 mm	195.4 mm	36 mm	37 mm	55 mm	54.7 mm
						Q-factor : 134.7 mm
						Bottom Bracket Type : GXP : PressFit GXP

CRANKSET

SRAM®